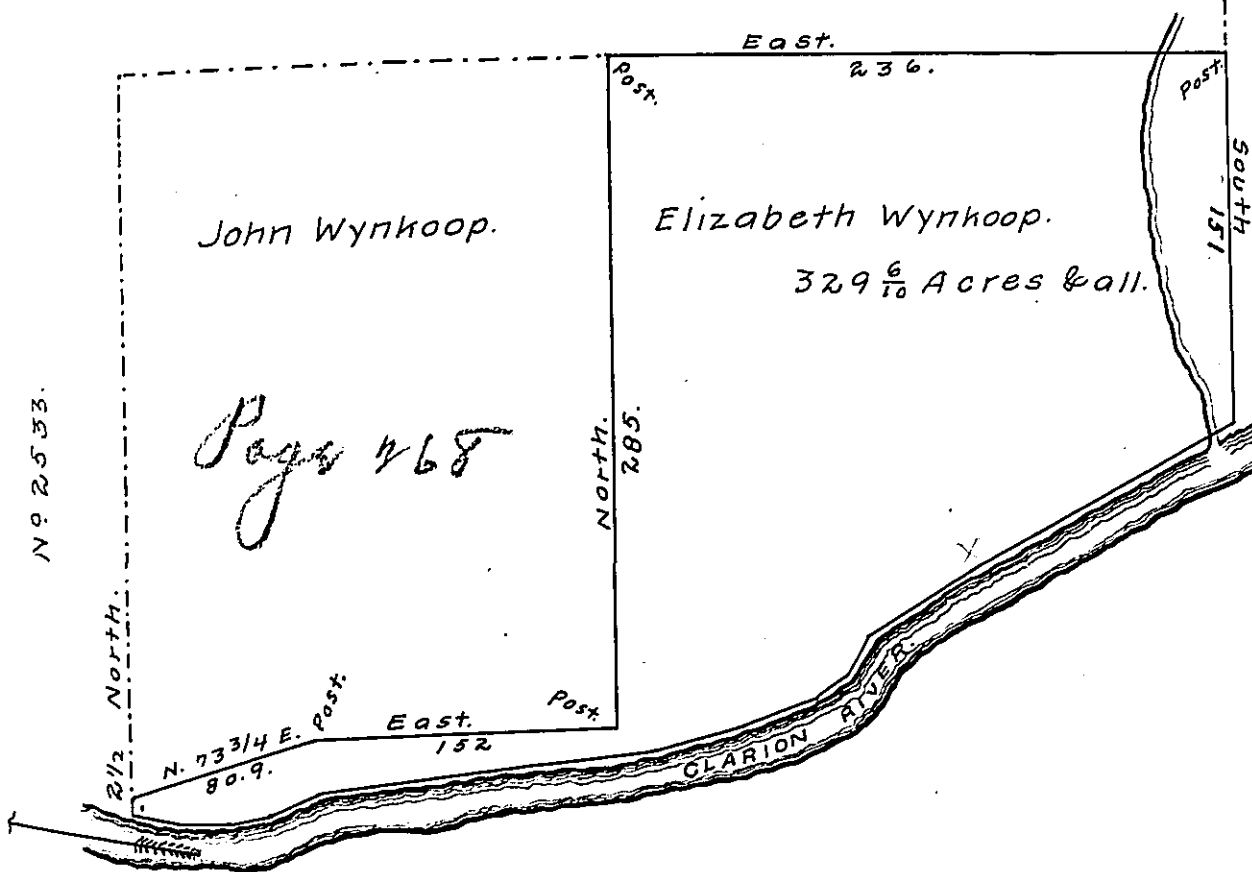


FORM NO 1.

N^o 2548.
S. & N. Large.



Nelson Strong
 now
 J. Wynkoop's Heirs.

Courses & distances.
(obliterated).

5.59 W.	101	perches.
5.57 W.	28	"
5.60. W.	54	"
5.23. W.	19	"
5.59 1/4 W.	14	"
5.66 1/4 W.	10	"
5.71 W.	22	"
5.79 W.	40	"
5.84 1/2 W.	144	"
5.67. W.	20	"
5.87 W.	16.6	"
WEST	22	"
N. 77. W.	20	-

To James P. Barr Esqr.
Surveyor General of Pa.

By virtue of a warrant dated the 26th. of June A.D. 1865 and to me directed. I have surveyed the twentieth day of September 1865 for Elizabeth Wynkoop .the above described tract of land (improved) containing three hundred twenty nine and six tenths acres and allowance of six percent. situate in ~~Forest~~ Millstone township Forest County. bounded and described as above

S. F. Rohrer.
Co. SUR.

IN TESTIMONY that the above is a copy of the original remaining on file in the Department of Internal Affairs of Pennsylvania, made conformably to an Act of Assembly approved the 16th day of February, 1833, I have hereunto set my Hand and caused the Seal of said Department to be affixed at Harrisburg, this nineteenth day of June, 1907.

Henry Houch
Secretary of Internal Affairs.